

ST DAVID'S SQUARE

TRADE PARK

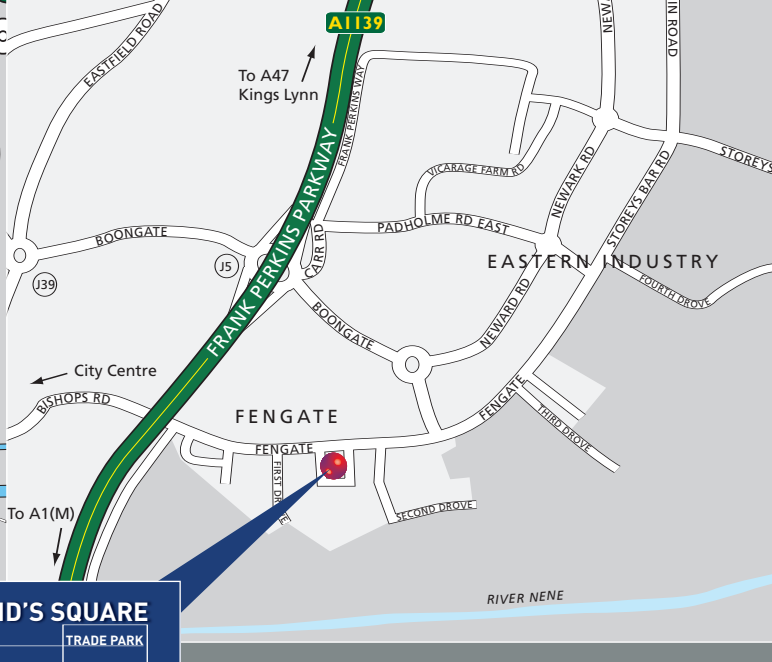
Fengate
Peterborough
PE1 5QA

TRADE / WAREHOUSE UNITS
565 - 7,760 sq ft (52 - 721 sq m)

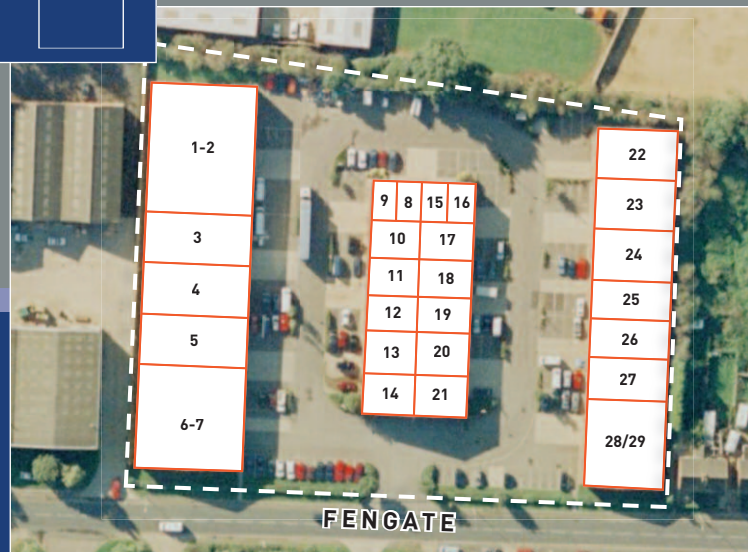
TO LET



- ESTABLISHED TRADE PARK
- PROMINENT LOCATION
- FLEXIBLE LEASES
- COMPETITIVE RENTS
- IMMEDIATE OCCUPATION



ST DAVID'S SQUARE
TRADE PARK



ST DAVID'S SQUARE

TRADE PARK

LOCATION

Located in the established Eastern Industrial area, St David's Square Trade Park is approximately 1 mile from Peterborough City Centre and less than a mile from the junction of the A1139 Frank Perkins Parkway and Boongate, connecting the A1 (north-south) with the A47 (east-west). St David's Square Trade Park is prominently located fronting Fengate, one of the principal routes linking the city centre to the Eastern Industrial area.

DESCRIPTION

St David's Square Trade Park comprises 29 trade/warehouse units. The scheme is popular with trade operators and occupiers include Screwfix Direct. Units benefit from three-phase electricity and good levels of parking.

TERMS

Units are available to let on new flexible 3 year leases incorporating breaks. There is a standard short-form of lease for St David's Square Trade Park, enabling businesses to move in quickly and with minimal fuss.

AVAILABILITY

Details of available units and rents are shown on the accompanying schedule. All rents and other outgoings will be subject to VAT.

VIEWING & FURTHER INFORMATION

For viewing and further information, please contact:

**Lambert Smith
Hampton**

01733 563921

2/6 PRIESTGATE PETERBOROUGH PE1 1JQ

**budworth
hardcastle**

01733 209 480

www.budworthhardcastle.com